



UPS Scan To Order

Printer Setup Guide For Windows

Label Printer Enablement

Step 1: Download Zebra Browser Printer for Windows. Click the link 'Zebra_Browser Printer Utility For Windows' via the link below.

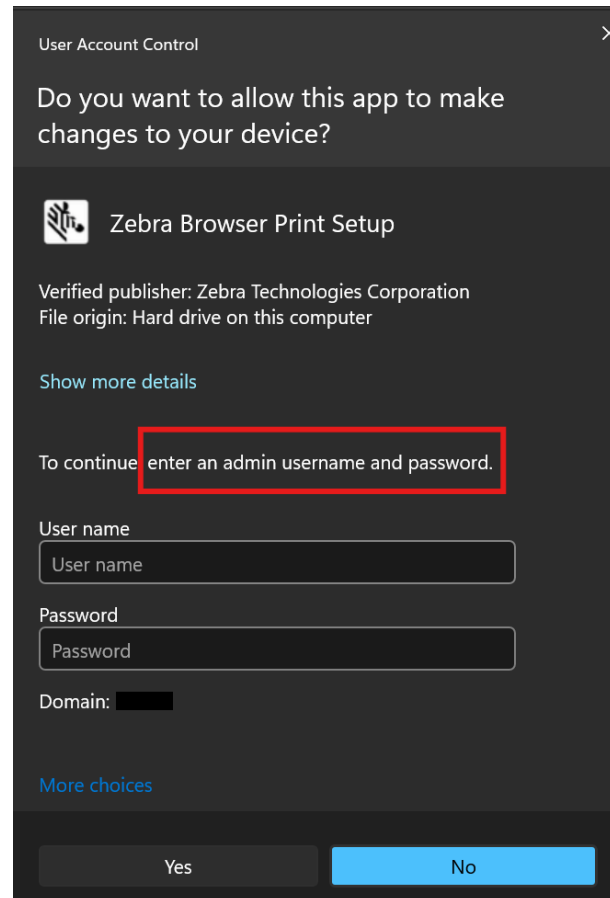
[Scan To Order Label Printer Set Up](#)

Step 2: Install Zebra Browser Printer Utility. Double-click the 'Zebra_Browser Printer Utility For Windows.exe' file that was downloaded on your local machine.

- The download of the executable file will begin.
- Double-click the installer after the download is complete and follow the installation instructions.

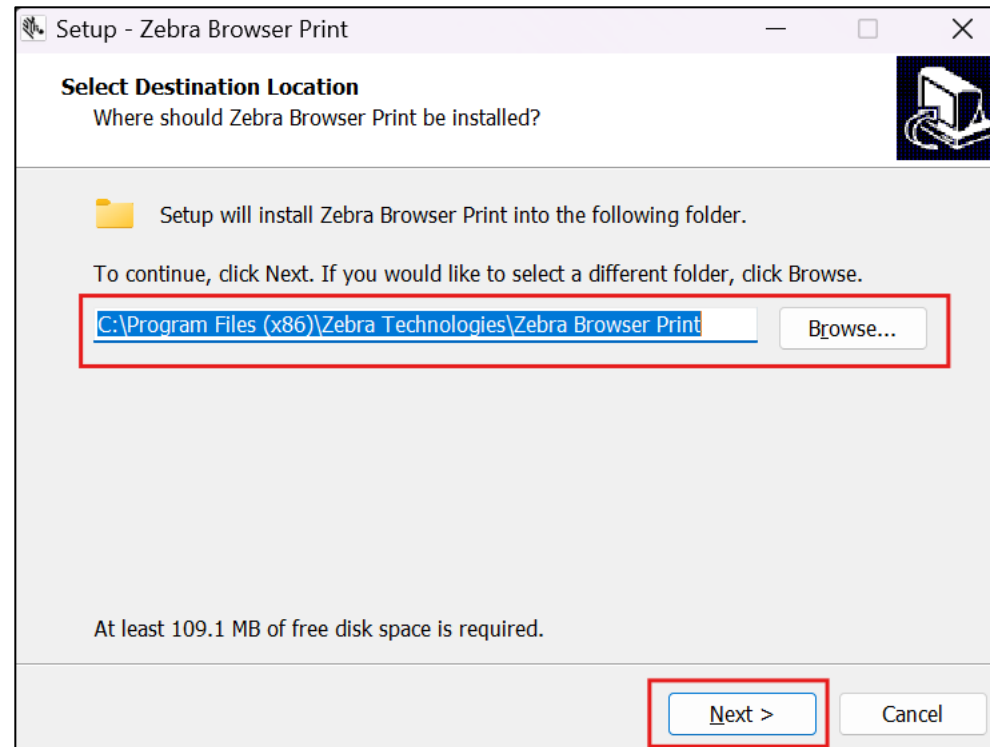
Label Printer Enablement

Step 2a: Contact your IT Department or Hardware Support Team if you are prompted to input your admin credentials.



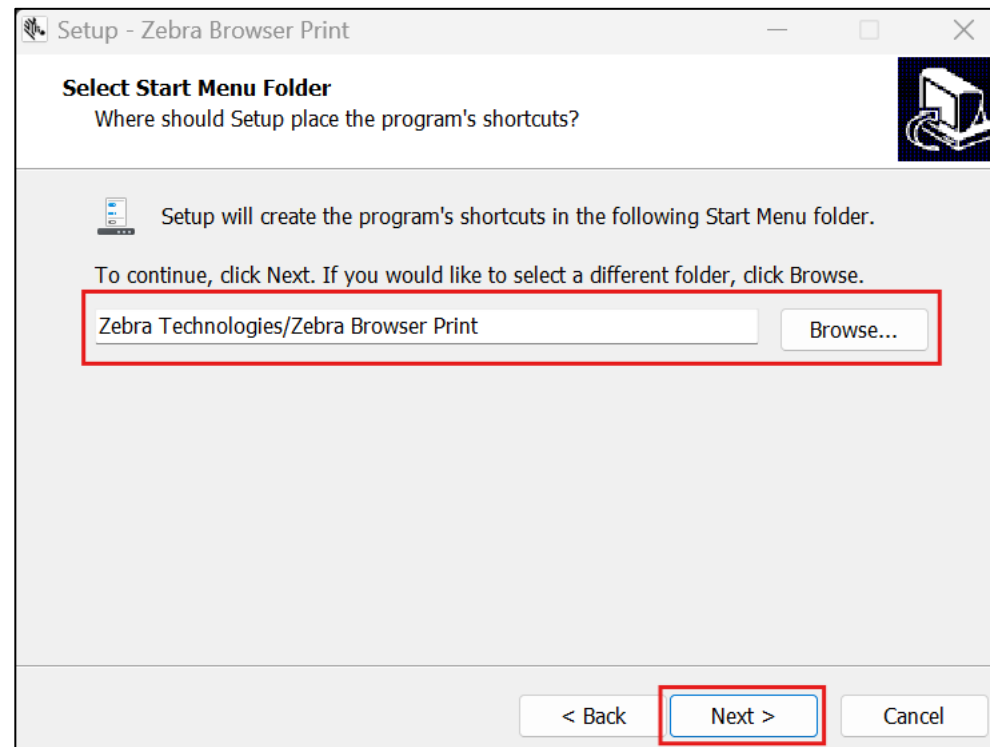
Label Printer Enablement

Step 3: Select the location to save the file and click 'Next'.



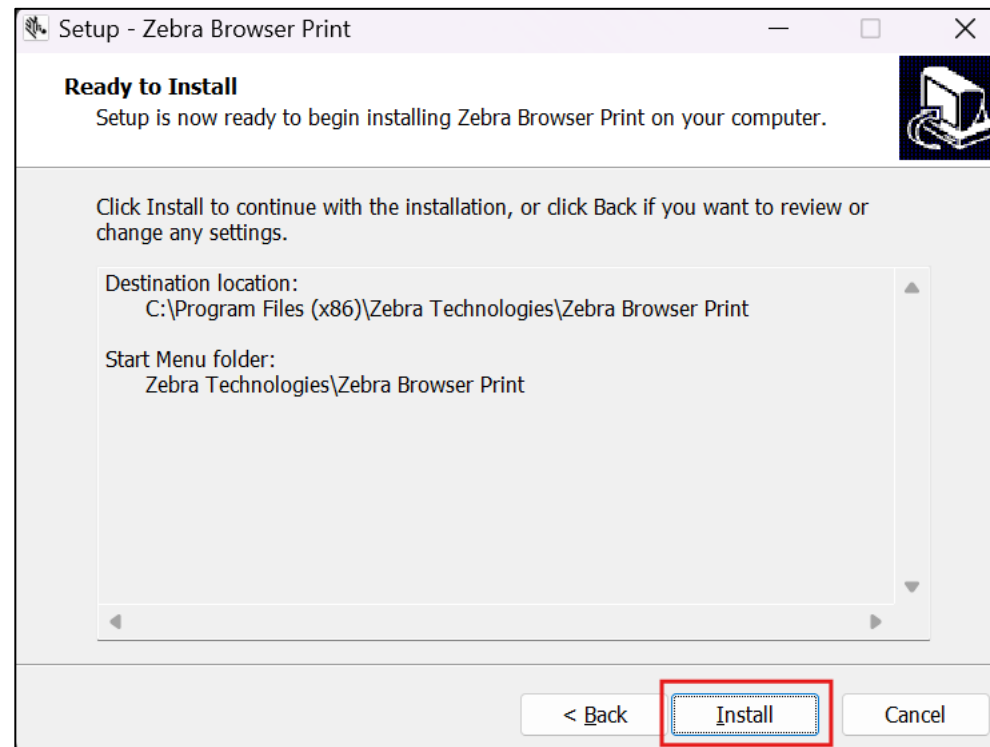
Label Printer Enablement

Step 4: Select where to run the software and click 'Next'.



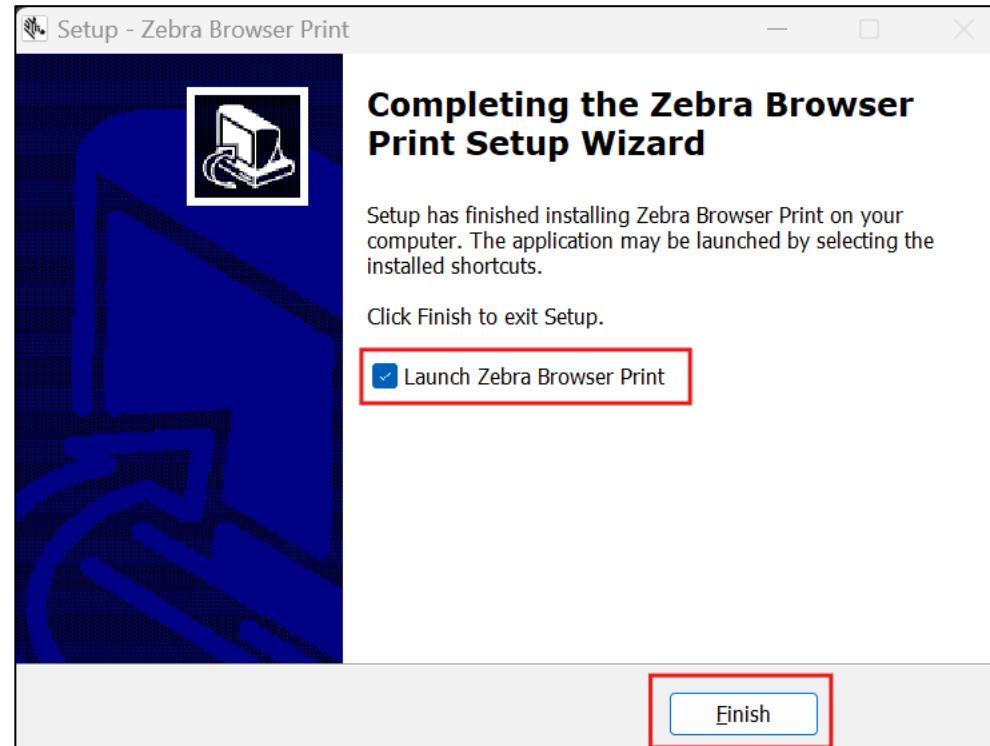
Label Printer Enablement

Step 5: Click 'Install'.



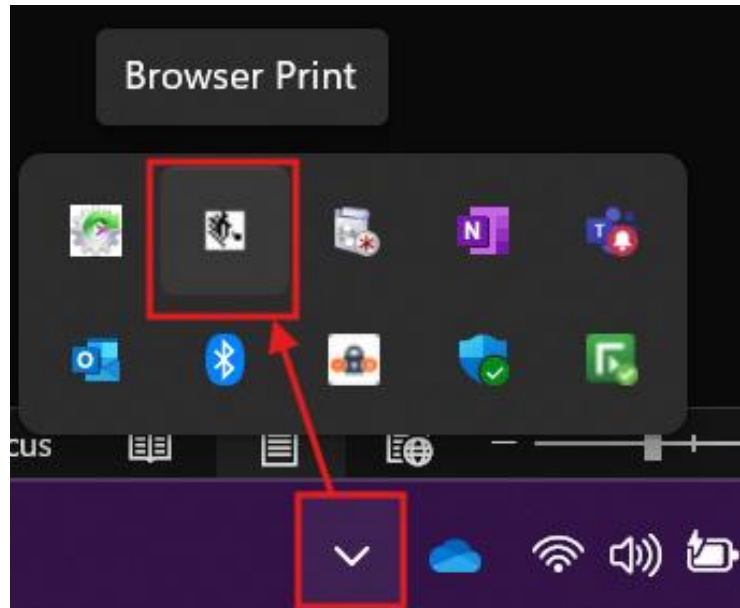
Label Printer Enablement

Step 6: After successful installation 'Launch Zebra Browser Print' is selected by default. Click 'Finish'.



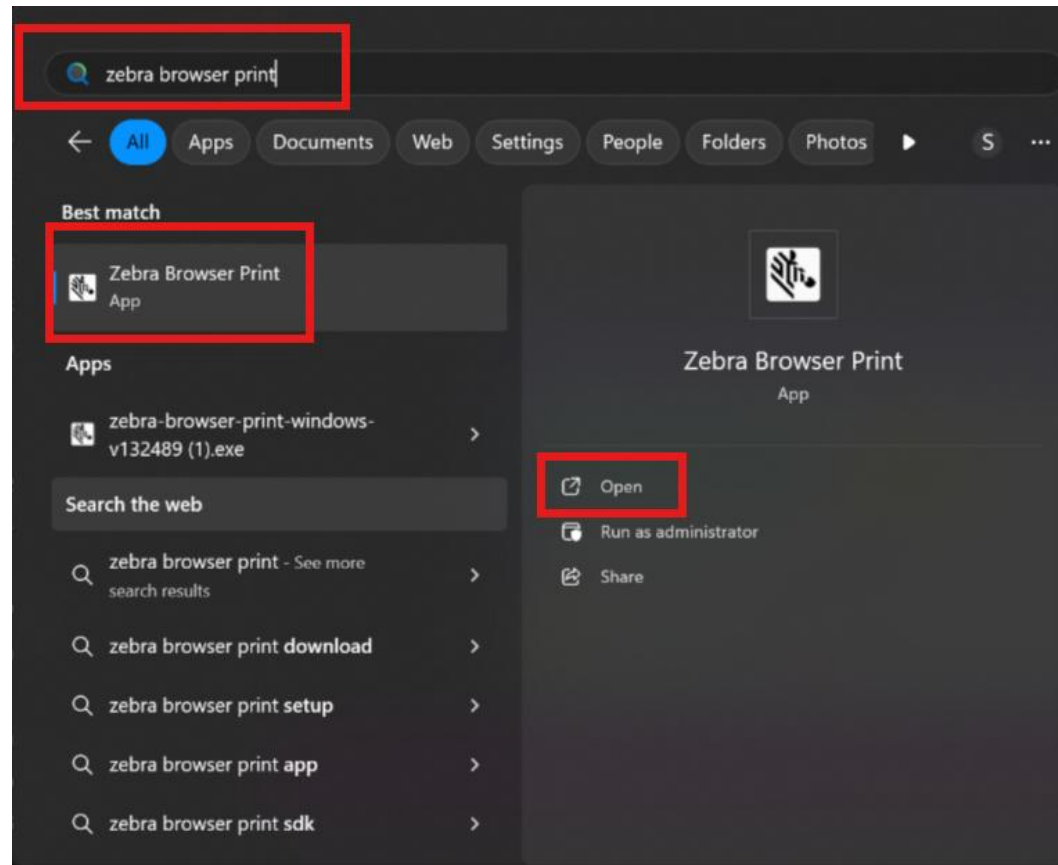
Label Printer Enablement

Step 7: After successful installation, click the 'show hidden icons' arrow located near the system tray on the taskbar in the bottom right corner. A flyout menu will display the hidden icons. Find the 'Zebra' icon as shown below.



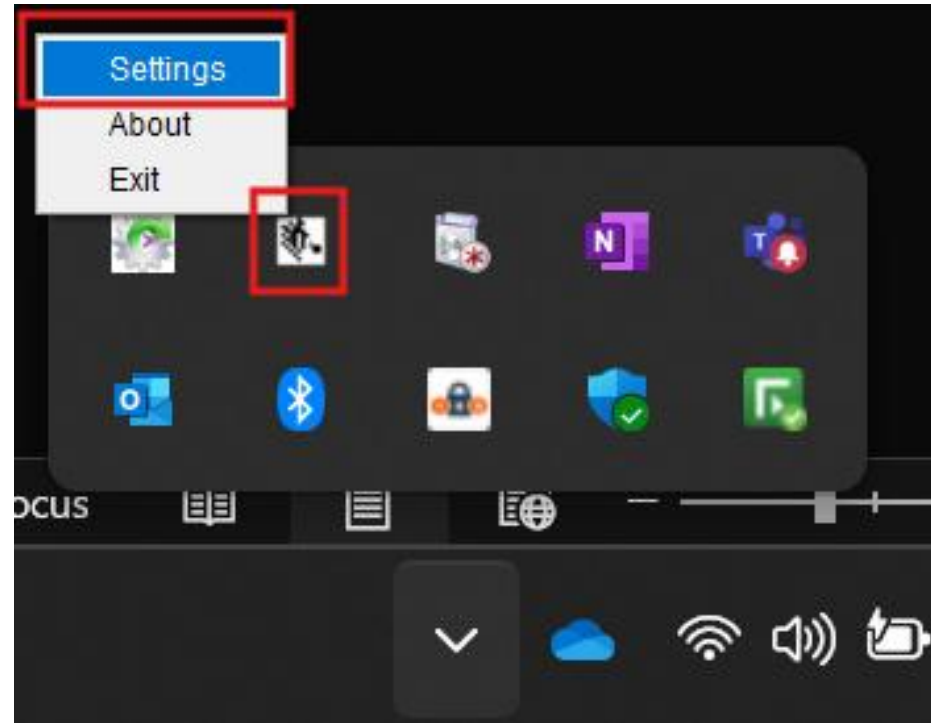
Label Printer Enablement

Step 7a: If the Zebra icon is not visible in the system tray, search for 'Zebra Browser Printer' and select 'Open'.



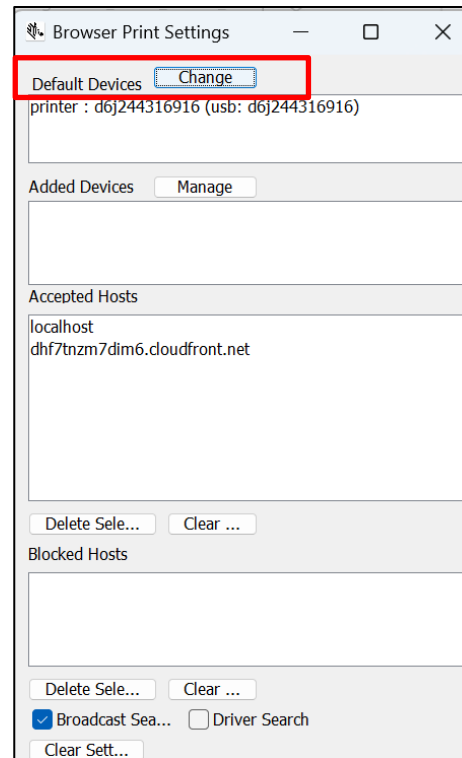
Label Printer Enablement

Step 8: Right click on the Zebra icon and select 'Settings'.



Label Printer Enablement

Step 9: The installed Zebra printer will be listed under the 'Default Devices' section. Confirm the default printer is correct. To update, select 'Change' and choose from the additional printer options.



Printer set up is complete.